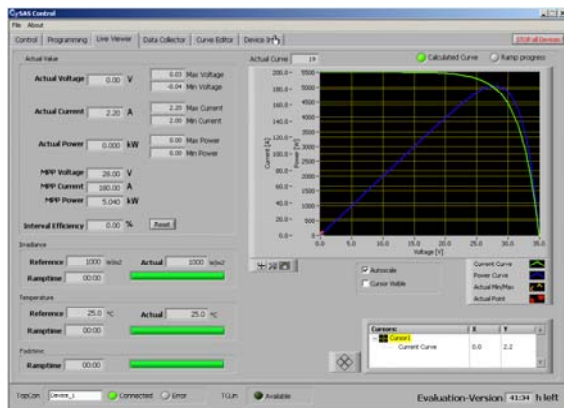
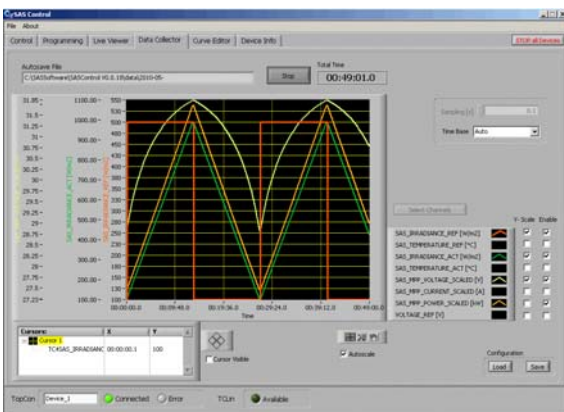


Features

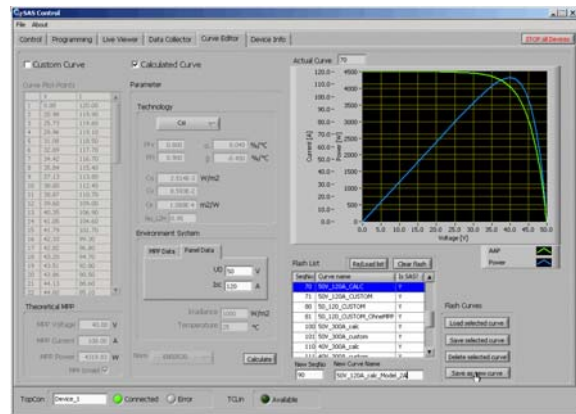
- Software for simulation of solar arrays (PV simulation)
- Simulation of characteristic curve $I = f(U)$ of solar panel in firmware (1-diode model according to EN50530 standard)
 - Parameter based
 - Including the theoretical MPP value
- Manipulation of irradiance, temperature, amplitude or input scaling with special commands.



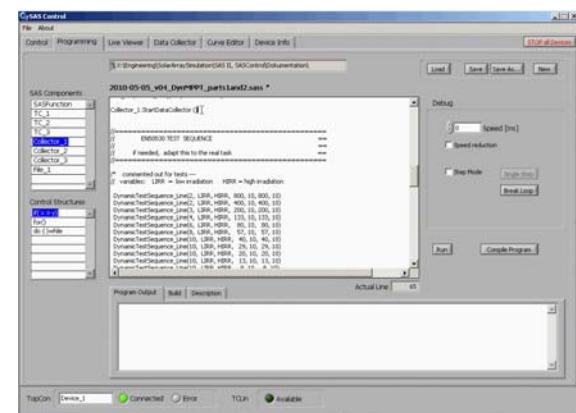
- LiveViewer:** Presentation of TopCon live data
 - $I=f(U)$ curve currently used
 - Changes of irradiance / temperature
 - MPPT-Efficiency (based on energy calculations)



- DataCollector:** 8-channel longterm data logger (see figure above)
 - Virtually unrestricted signal recording with direct transmission to PC file
 - Arbitrary selection from a set of possible signals
 - Start/Stop programmable by software command



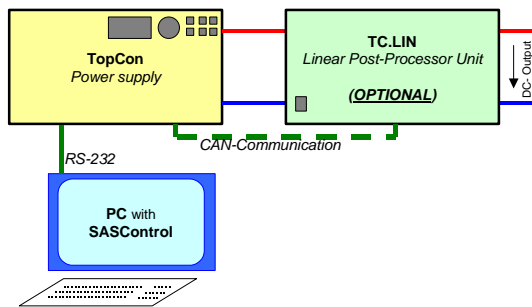
- CurveEditor:** Management of curve in TopCon device
 - Calculated SASCurve: based on parameter set (according to EN50530 model), incl. MPP
 - Computed SASCurve: created from points (U, I), incl. MPP
 - Curve preview
 - Manipulation of curve list on TopCon



- Programming:** Software editor with easy to learn (JavaScript alike) programming language
 - allows for arbitrary command sequences and automatic test cycles
 - programming with intelligent editing support
 - Extended debugging capabilities: single step mode, slow motion, interactive loop break
- Software for running tests according to EN50530 (static / dynamic MPPT) provided.
- LabView-based GUI
- Works with TopCon (alone) or with TopCon / TC.LIN combination.
- Support for up to 3 TopCons (under development).
- Swiss made: developed, implemented and tested in Switzerland by Regatron AG, manufacturer of TopCon product family.

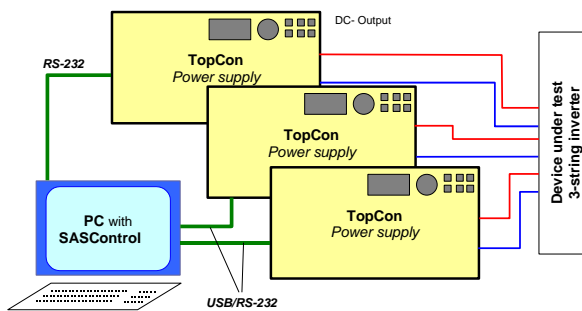
Typical System Configuration

SingleTopCon + Single TC.LIN



Typical System Configuration

Triple TopCon (for three-string-inverter)



Scope of delivery

- Newest version of TopCon firmware including all functionality that is needed by SASControl.
- Installer package for PC including:
 - TCIO.DLL (communications functions)
 - SASControl.DLL (SAS related functions)
 - SASControl.exe (SAS user interface)
 - LabView Runtime Engine
- Operations and Programming Handbook
- Teaching examples (thoroughly explained in Programming Handbook)
- Implementations of EN50530 tests (for adaptation to own requirement)
- Installation support from your sales partner or Regatron

Schulz-Electronic GmbH
Dr.-Rudolf-Eberle-Straße 2
D-76534 Baden-Baden
Fon +49.7223.9636.0
Fax +49.7223.9636.90
vertrieb@schulz-electronic.de
www.schulz-electronic.de

Schulz Electronic
Professional Power Supplies