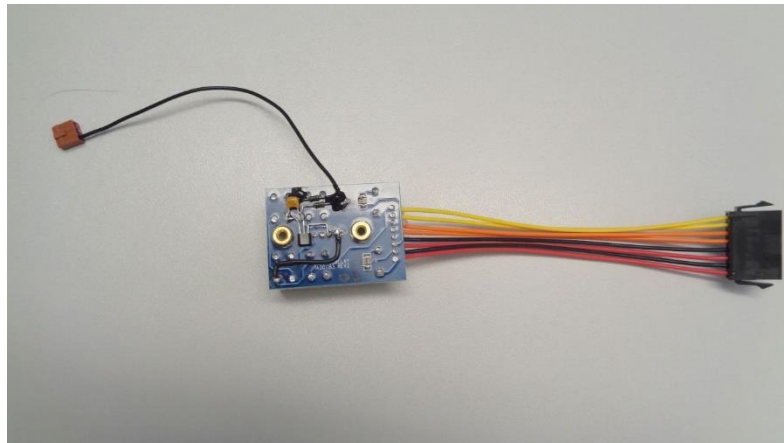


## Exchange Safety Relay Laser diode driver LDN



Safety relay (here: rev. since 04/2020)



Symbols:



Danger of shock current!



Caution!



This power supply is only to be installed/operated by qualified personnel, aware of potential risks and dangers.  
Improper use will lead to vital dangers for life and can result in damage to goods.  
Stick to valid safety regulations.



Caution!

This power supply delivers currents dangerous to life.



Caution!

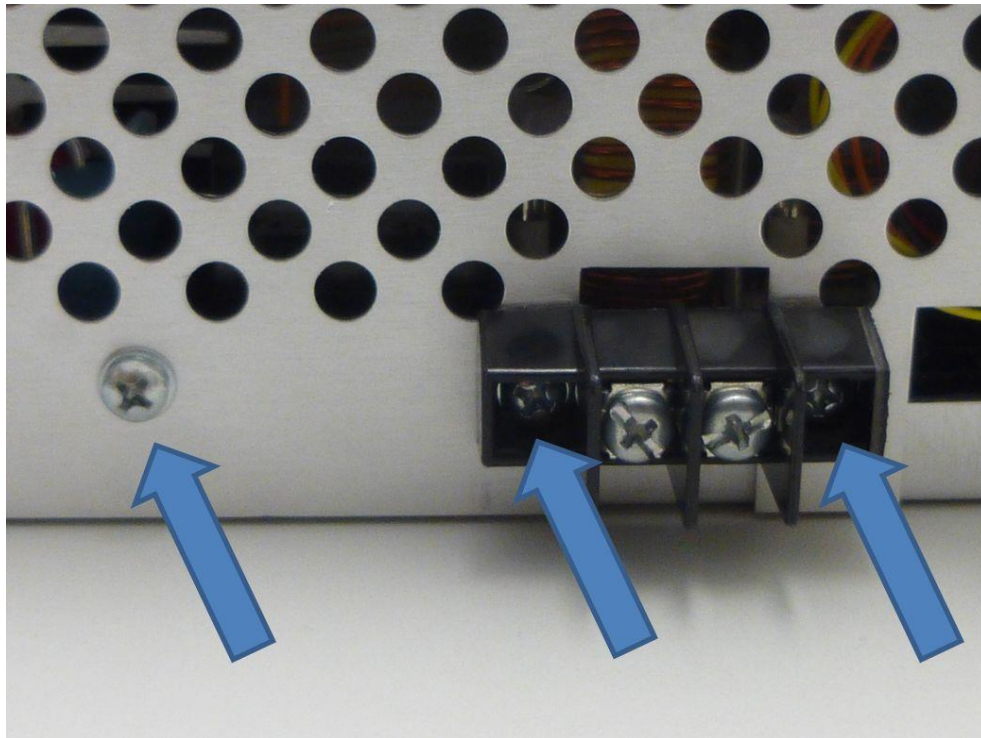
First remove mains input, then wait for some minutes, before opening the unit.

Remark: Please stick to ESD guidelines!

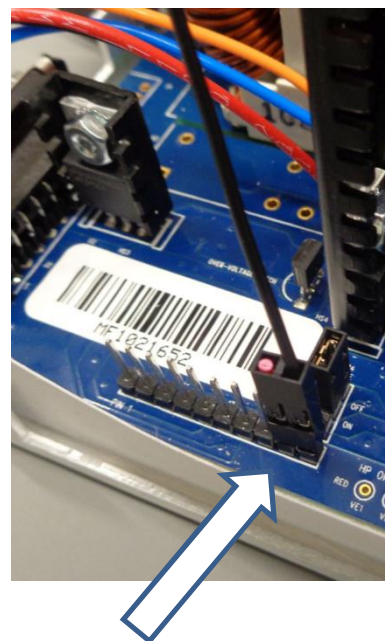


Ersteller:	BS / SH	Geprüft/freigegeben:	MH	Seite	2 von 6
Bedienungsanleitung:	Exchange_SR_LDN_B_E			Gültig ab	31.03.20
Ver. 2.1				Ersetzt Version vom	24.08.16

1. Remove all countersunk screws from the housing and additionally the following three further screws:

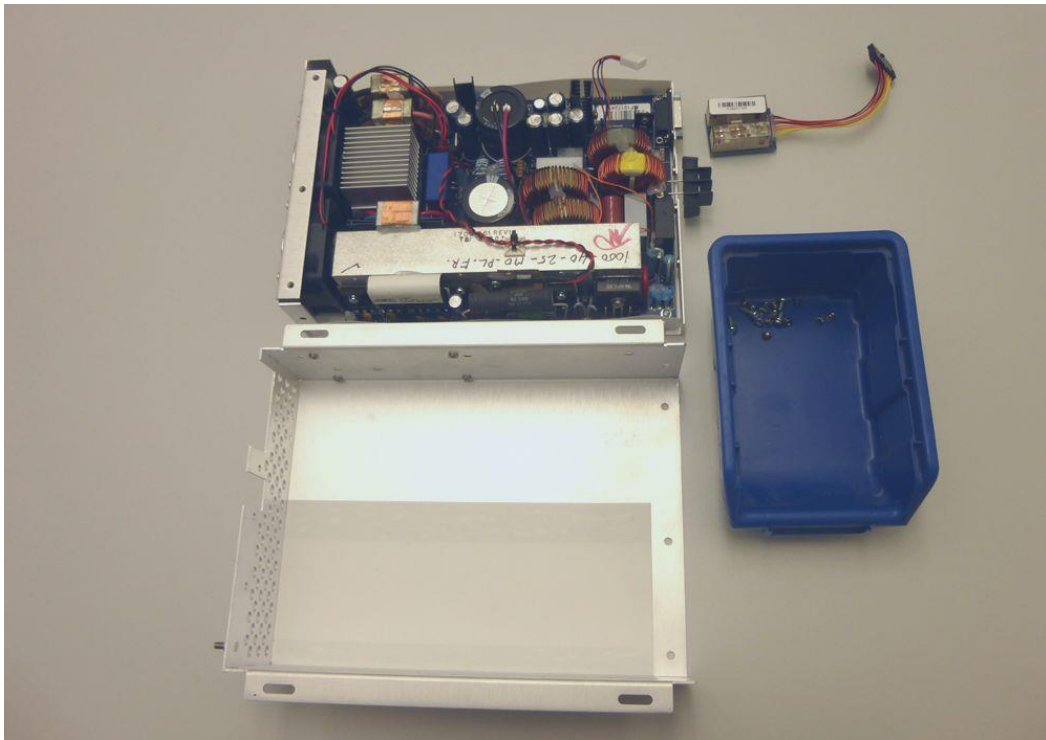


2. a) Remove chassis top cover carefully and de-plug the safety relay connector  
b) Remove the black mainboard connecting cable from the pin header  
c) Slide out (of the chassis) the external black 8pin SR connectors by pressing the lateral noses.



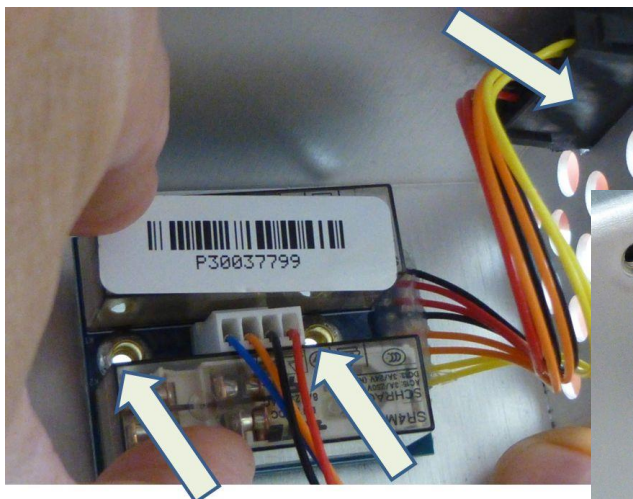
Ersteller:	BS / SH	Geprüft/freigegeben:	MH	Seite	3 von 6
Bedienungsanleitung:	Exchange_SR_LDN_B_E			Gültig ab	31.03.20
Ver. 2.1				Ersetzt Version vom	24.08.16

## Removed relay board

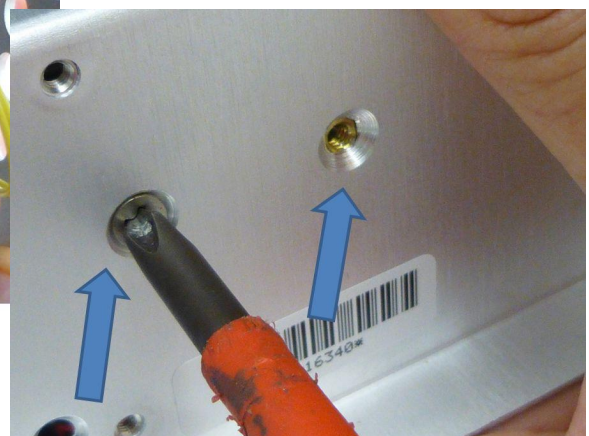


3. Connect the new relay board with the 4-wire mainboard cable by plugging-in the white connector. Then first mount the SR board (from outside using the 2 mounting screws) to the chassis' inner side. Insert the black external 8pin SR connector into the according slit and press till it latches.

Inside:



Outside:

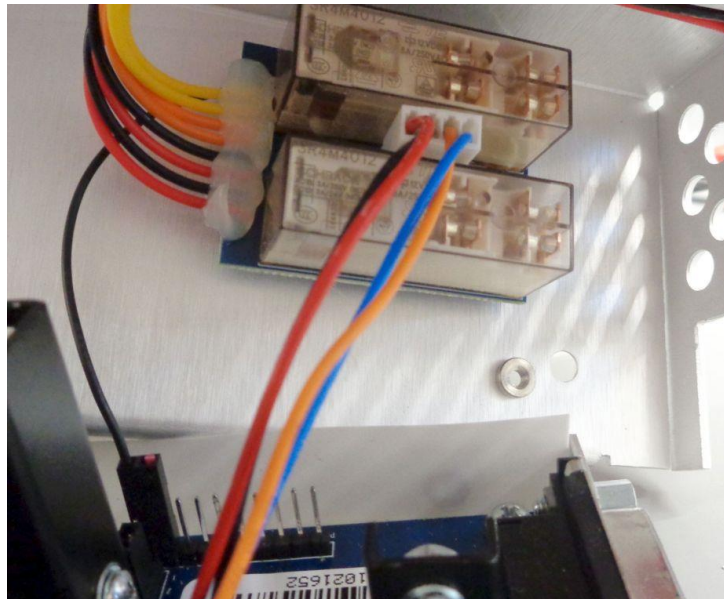
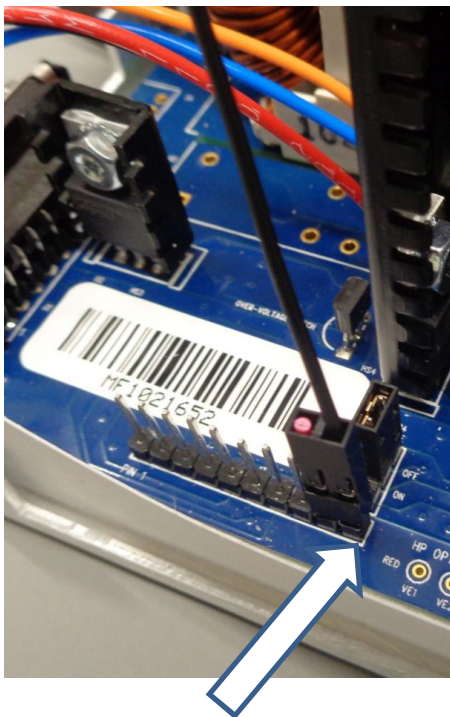


Ersteller:	BS / SH	Geprüft/freigegeben:	MH	Seite	4 von 6
Bedienungsanleitung:	Exchange_SR_LDN_B_E			Gültig ab	31.03.20
Ver. 2.1				Ersetzt Version vom	24.08.16

Outside:



4. Connect the secondary black cable onto the outer most pin of the pin header on the mainboard (connector model can deviate from picture).



Ersteller:	BS / SH	Geprüft/freigegeben:	MH	Seite	5 von 6
Bedienungsanleitung:	Exchange_SR_LDN_B_E			Gültig ab	31.03.20
Ver. 2.1				Ersetzt Version vom	24.08.16

5. Then put on slowly and thoroughly the top cover onto the chassis and insert and fix all screws properly.
6. An isolation/leakage current test should be performed at the AC input side according to local rules.  
Do NOT perform this test at the DC output side. Otherwise the output capacitor will be damaged.
7. Attach the provided warranty seal sticker onto the according screw!



In case of questions and any technical doubt please ask your support in Baden-Baden:

Phone: 07223-9636-63 oder -41

Fax: 07223-96 36-90.

e-mail: [support@schulz-electronic.de](mailto:support@schulz-electronic.de) or [service@schulz-electronic.de](mailto:service@schulz-electronic.de)

In case of a repair, please consult with us and get yourself an RMA number from our website  
This allows for most efficient and quickest processing of your demand.

Your contact:



Ersteller:	BS / SH	Geprüft/freigegeben:	MH	Seite	6 von 6
Bedienungsanleitung:	Exchange_SR_LDN_B_E			Gültig ab	31.03.20
<a href="#">Ver. 2.1</a>				Ersetzt Version vom	24.08.16